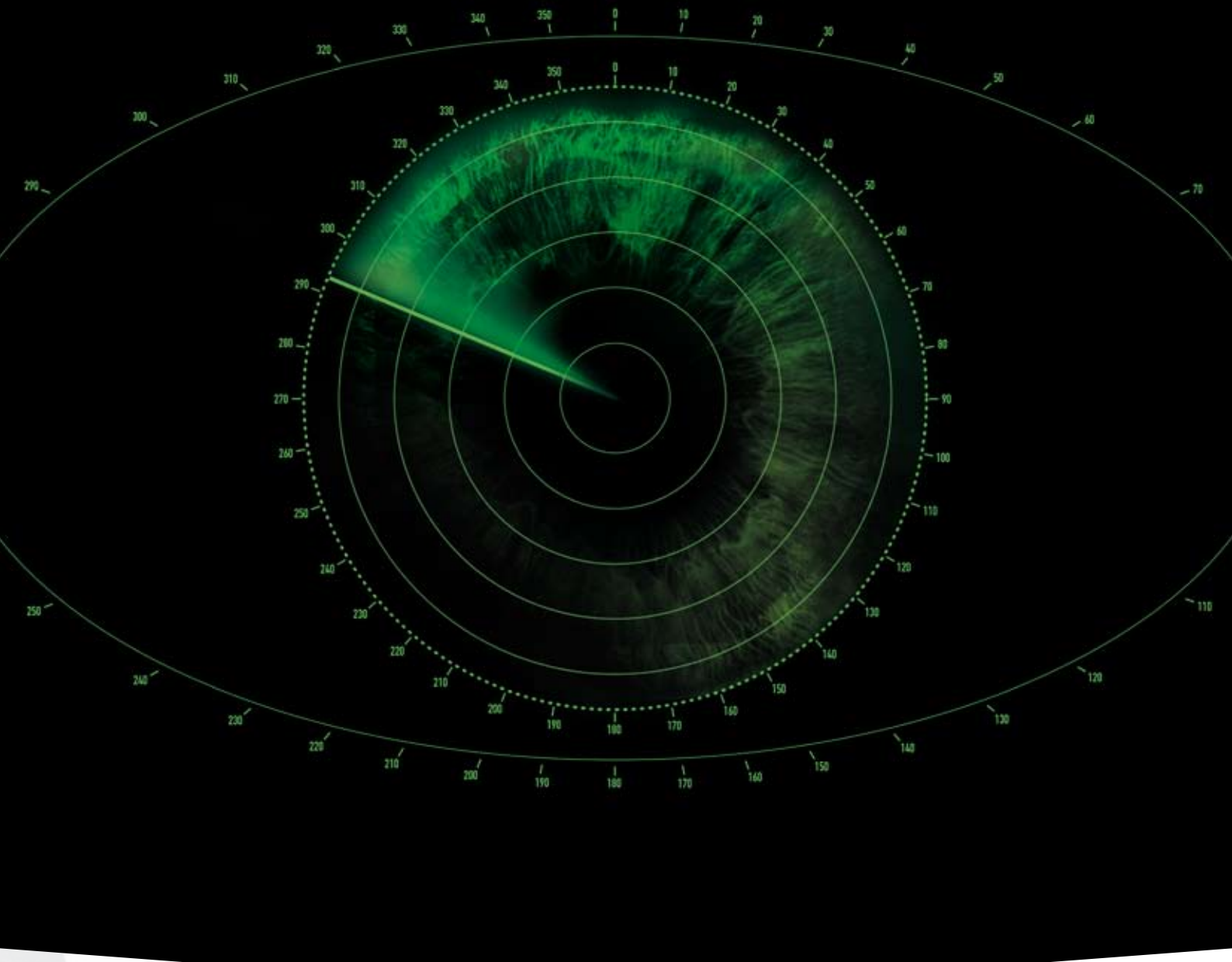


Pacline



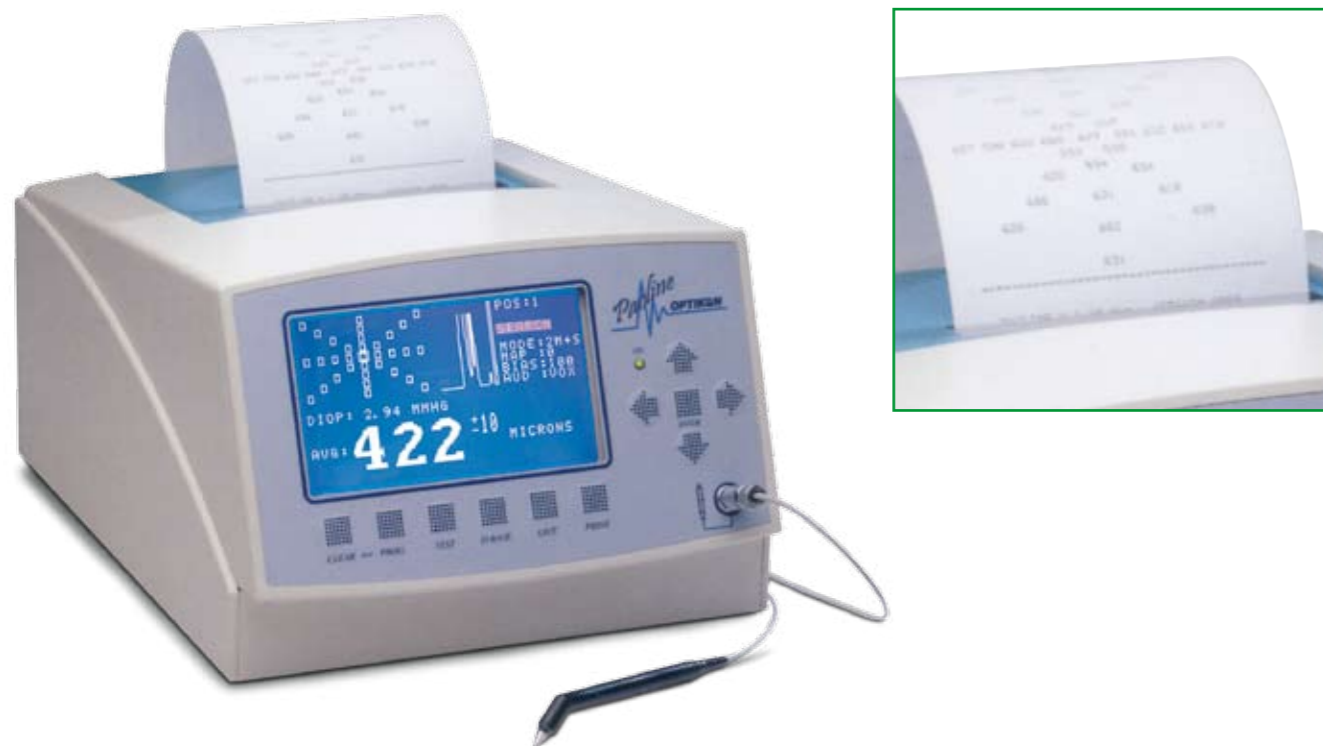
OPTIKON[™]
Man and Technology

REF 151003

- 20 MHz probe.
- Large size graphic blue backlit LCD display.
- Compact size.
- Built-in printer.
- Echoes display.
- 4 standard and 11 programmable maps.
- Auto-saving mode.
- Auto-averaging mode.
- Sound or voice synthesis.
- Glaucoma screening through central corneal thickness measurement.

TECHNICAL SPECIFICATION

- | | |
|---|--|
| <ul style="list-style-type: none"> ▪ POWER SUPPLY
110/220V - 50/60Hz ▪ SIZE
150 x 230 x 290 mm ▪ WEIGHT
2,2 kg (4,8 lbs) ▪ PROBE
20 MHz, solid tip ▪ RESOLUTION
1 μm | <ul style="list-style-type: none"> ▪ CLINICAL ACCURACY
+/- 5 μm ▪ MEASUREMENT RANGE
da 0,28 a 1 mm ▪ PRINTER
Thermal 832 dots ▪ SCREEN
Backlit LCD, 220x120 pixel 20 frames/sec. ▪ REGULATORY
EN 60601-1, EN 60601-1-1, EN 60601-1-2, 93/42/CEE |
|---|--|



ACCESSORIES



142003 Footswitch for biometer and pachymeter



153003 20 MHz straight pachymetry probe



149003 Thermal paper (3 rolls)



153004 20 MHz angled pachymetry probe



149004 Bag for biometer/pachymeter



159001 Pachymetry tester

■ **OPTIKON 2000 S.p.a.**

Via del Casale di Settebagni, 13
00138 Rome
www.optikon.com

■ **CONTACTS**

■ **CUSTOMER SERVICE**

tel. +39. 06.88.88.355
fax +39. 06.88.88.440
e-mail: sales@optikon.com

■ **WORLD DEALERS**

EUROPE

Austria
Belgium
Denmark
France
Germany
Greece
Italy
Netherlands
Poland
Portugal
United Kingdom
Czech Republic
Romani
Russia
Slovakia
Spain
Switzerland
Turkey
Ukraine
Hungary

AFRICA

Algeria
Egypt
Morocco
South Africa
Sudan
Tunisia

NORTH AMERICA

Canada
USA

CENTRAL AMERICA

Cuba
Guatemala
Mexico

SOUTH AMERICA

Argentine
Brasil
Chile
Colombia
Ecuador
Peru

MIDDLE EAST

Saudi Arabia
Bahrain
Jordan
Iran
Iraq
Lebanon
Pakistan
Syria

ASIA

Bangladesh
China
South Korea
Japan
Hong Kong
India
Indonesia
Nepal
Philippines
Thailand
Taiwan
Vietnam



Distributed by:

TM denotes trademark of Optikon 2000 S.p.A.
All right reserved.

